

# Optimization of Casting Defects in Modern Alloy Wheel Casting With Quality Control Estimation

Mohit Kumar, Prof. Amit Kumar Tanwar, Prof. Bhagwan Das

**Abstract**— With the increasing use of aluminum wheels in automotive industry, the aluminum foundry industry had to focus on the quality and reliability of the products. To produce good quality aluminum cast wheels, defects must be minimized.

Aim of the current study is to study defects of an aluminum alloy casting and to improve the quality of casting using quality control tools. This study shows the systematic approach to find the root cause of major defects in aluminum castings using defect diagnostic approach as well as cause and effect diagram. Casting defect analysis is carried out using techniques like historical data analysis, cause-effect diagrams, design of experiments and root cause analysis. Data from X-ray inspection (Radiographic Inspection) have been collected along with the production parameter data. Using Pareto chart major defects in the aluminum castings were noted. The major defects for the rejections during production were identified as shrinkages, inclusions, porosity/gas holes and cracks. Each defect is studied thoroughly and the possible causes for the defects are shown in Fishbone Diagrams (Cause Effect Diagrams). As the shrinkages mainly occur due to lack of feed ability during the fluid flow the stalk changing frequency is noted along with the shrinkages defects and a relation is drawn between them. As hydrogen forms gas holes and porosity in the aluminum castings the amount of hydrogen present in the molten metal is studied by finding specific gravity of the samples collected. The molten metal temperature affects the amount of the hydrogen absorbed by it. So the effect of molten metal temperature on the specific gravity of the sample collected have been shown in a graph and the optimum value for molten metal temperature was found out.

**Index Terms**— Alloy wheel, molten metal, Fishbone Diagram.

## I. INTRODUCTION

The use of aluminum castings in the automotive industry has increased incredibly over the past two decades. The driving force for this increased use is vehicle weight reduction for improved performance, particularly fuel efficiency. In many cases, the mechanical properties of the cast aluminum parts are superior to those of the cast iron or wrought steel parts being replaced. For the production of aluminum alloy wheel, Al-Si casting alloys are mostly used as the raw material. Because of their good casting properties, this type of alloys provides the alloy wheel to have good corrosion resistance and strength so that the vehicle can adapt to the road and weather conditions.

**Mohit Kumar** Pursuing M.Tech. from RIT Roorkee ( Uttarakhand Technical University).

**Amit Kumar Tanwar**- Professor in RIT Roorkee

**Bhagwan Das**-Professor in RIT Roorkee

The main alloying elements of Al-Si castings are silicon, magnesium, iron, manganese, beryllium, zinc, strontium and titanium. Each element gives some special features to the casting alloy so that the alloy can be produced with desired properties.

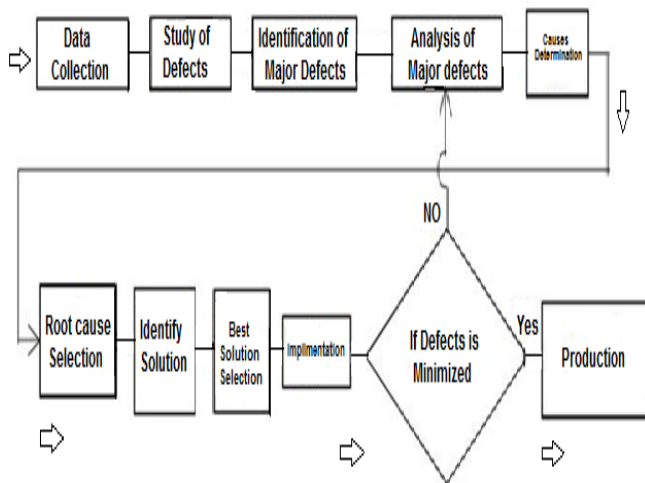
Aluminum casting alloy wheels are generally produced using low-pressure die-casting. For the application of this casting method, Al-Si casting alloys should be chosen owing to their high adaptation capability to the permanent metal molds. By the help of alloying elements, it is possible to achieve effective and efficient aluminum alloy wheel production. However, in production of wheels, defects in the cast microstructure undermine performance characteristics.

Quality improvement of aluminum alloy wheel production facilitates understanding the process parameters and their influences on the defect formation. To decrease the amount of scrap and rework, satisfactory quality of the production has to be achieved. This can be done using quality improvement tools. Controlling process parameters can decrease defects on aluminum alloy wheel and the amount of scrap produced. In this study, defects on aluminum alloy wheel were investigated by means of real time radioscopic method and minimize using quality control tools.

## II. METHODOLOGY : COQ FRAMEWORK

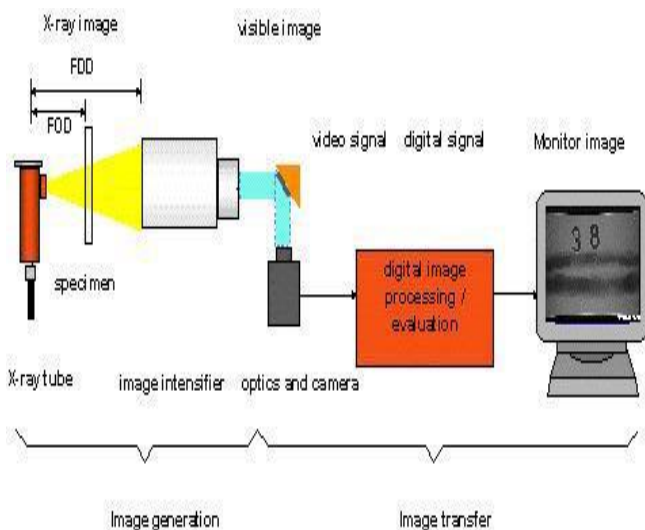
Defect analysis in casting is carried out using techniques like

1. Historical data analysis
  2. Cause-effect diagrams
  3. Design of experiments and
  4. Root cause analysis
- Identifying the casting defect correctly is the first step in the defect analysis [9]
  - Then the identification of the sources of the defect is to be made
  - By taking the necessary corrective remedial actions defects can be controlled
  - Implementation of wrong remedial actions makes the problem complicated and severe
  - The major rejected aluminum alloy wheel castings were analyzed using “Defect Diagnostic Approach” as shown in Figure.



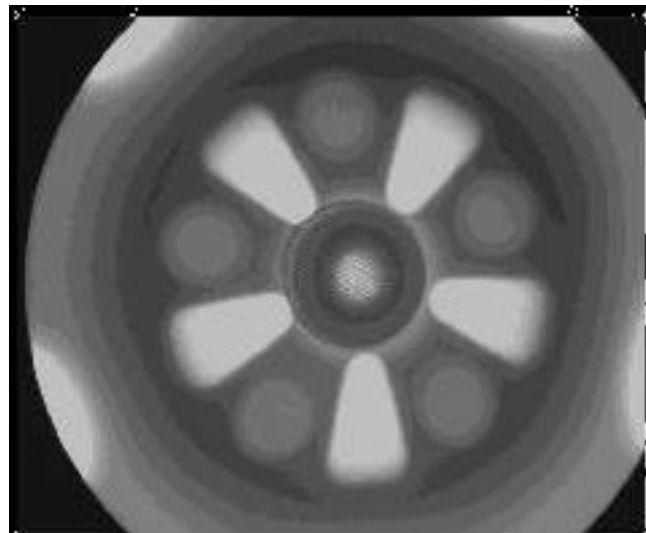
### III. SINGLE INSPECTION

The real time radiographic inspection (RTR) is a technique to detect the micro defects in aluminum alloy wheel manufacturing. In this arrangement X-ray is used to detect the faults. The arrangement for RTR is shown in figure.



RTR inspection is especially applied for the casting materials, which are produced for automotive, and airplane industry, acceptable defect type and defect size is so a few. Real time radioscopic method has been developed for the last few years and it is widely used in Al wheel production lines.

In this method, a feeding line from the casting machines to the RTR system transports the wheels and then, they pass through the inspection unit. In the system, the robotic manipulator, controlled by an operator or an automatic system, assists the operator to inspect all territories of the wheels effectively and to see clearly the defects on the monitor. As a result, the operator of the RTR system agrees to choose the accept or reject criteria for the inspected wheel. The typical image of Al wheel, which is obtained by means of real time radioscopic inspection system, is shown in Figure.



### IV. CONCLUSION

In this study, casting of an Al alloy was investigated. Aim was to minimization of casting defects using 7 quality control tools. This study shows the systematic approach to find the root cause of major defects in aluminum castings using defect diagnostic approach as well as cause and effect diagram. To obtain more detailed and effective feedback control during casting of Al-alloy wheel, a process model for the production line was constructed. By help of this diagram the causes of defects and remedies can be pointed.

The results obtained in this present study have allowed the following conclusions to be made:

- Pareto diagram for defects have been drawn. The major rejections are due to shrinkages, cracks, inclusions.
- Cause effect diagrams have been drawn for shrinkages, cracks, inclusions.
- Data has been collected using check sheets and the no. of rejections due to various shrinkages has been noted. Using histogram it was noted that the hub shrinkages were more compared to rim and spoke shrinkages.
- With the use of histograms it was noted that the shrinkage percentage decreases with the increase in stalk change frequency. A proper riser prevents shrinkage formation by maintaining a path for liquid flow. Therefore the feeding in the die is achieved by the effective riser.
- The hydrogen content change is stable, between 700oC and 720oC temperature of molten metal. Between these temperature limits, the specific gravity values are in the range of change between 2.645 and 2.658. In this range, there is stability in the hydrogen content of molten metal.
- The relation between HF cleaning and inclusions was plotted and is concluded that there is a significant decrease in the inclusions with an increase in the HF cleaning frequency. Holding furnace cleaning and removal of dross would reduce inclusions. Metal filters can be placed in gate to filter incoming molten metal.

V. REFERENCES

- [1] W.F.Smith, Structure and Properties of Engineering Alloys, (John Wiley, New York, 1993), p.218.
- [2] R.Heine and P.Rosenthal, Principles of Metal Casting, (McGraw Hill, Tokyo, 1955), p.260.
- [3] B.Webster, Fundamentals of Foundry Technology, (Porcullis Press, New York, 1980), p.252.
- [4] H.Boyer and T.Gall, Metals Handbook, (American Society For Metals, Ohio, 1995), p.6.50.
- [5] Y.Lakhtin, Engineering Physical Metallurgy, (MIR Publishers, Moscow, 1977), p.411.
- [6] Alloy Typical Applications, (Society of Aluminum Manufacturers, Chicago, 1998), [http://www.aluminum.org/casting alloys.html](http://www.aluminum.org/casting%20alloys.html)
- [7] D.Rogers and B.Koepke, "Heat Treating Aluminum Auto Parts", in Advanced Materials and Processes, 4(1997), 152
- [8] Smith, G. M., 2004, Statistical Process Control and Quality Improvement, Pearson Education, New Jersey.
- [9] Chokkalingam, B., and Nazirudeen, S. S. M., 2009, Analysis of casting defect through defect diagnostic approach J. E. Annals, Journal of Engineering Annals of Faculty of Engineering Hunedoara, Vol. 2, pp. 209-212.
- [10] Borowiecki, B., Borowiecka, O., and Szkodzińska, E., 2011, "Casting defects analysis by the Pareto method," Archives of Foundry Engineering, Vol. 11, pp. 33-36.
- [11] Radiographic images of casting defects, <http://www.keymetals.com/>
- [12] Mane, V. V., Amit, S., and Khire, M. Y., 2010, "New approach to casting defect classification and analysis supported by simulation," a technical paper for 59th Indian foundry congress, Chandigarh, Vol. 5 pp. 87-104.
- [13] Sieansk, K., Borkowsk, S., 2003, "Analysis of foundry defects and preventive activities for quality improvements of castings," Metalurgija, 42(1), pp. 57-59.
- [14] Rao, P.N., 2000, *Manufacturing Technology*, Tata Mc-Graw-Hill publishing Company Ltd., New Delhi.
- [15] Tapan Roy "Analysis of Casting Defects in Foundry by Computerised Simulations (CAE) - A New Approach along with Some Industrial Case Studies" *Transaction of 61st Indian foundry congress 2013*
- [16] Casting defects, [http://en.wikipedia.org/wiki/Casting\\_defect](http://en.wikipedia.org/wiki/Casting_defect)
- [17] Automobile wheel, <http://www.p-wholesale.com/subcat/9/420/wheel-hub-rim-spoke-p38.html>
- [18] Striko Company, *Shaft Type Melting Furnace*, <http://www.striko.com>
- [19] Low pressure die casting, <http://www.gurutechnocast.com/pressurediecastingprocess.html>
- [20] Degassing, [http://www.substech.com/dokuwiki/doku.php?id=degassing\\_treatment\\_of\\_molten\\_aluminum\\_alloys](http://www.substech.com/dokuwiki/doku.php?id=degassing_treatment_of_molten_aluminum_alloys)
- [21] J.G. Conley, J.Huang, J.Asada and K.Akiba, "Modeling the effects of cooling rate, hydrogen content, grain modifier on microporosity formation in Al A356 alloys", in *Materials Science & Engineering*, A285 (2000), 49-55
- [22] PQ Systems, "SPC and ISO/QS-9000", in *Statistics Articles*, (2000), <http://www.pqsystems.com>
- [23] Ramsden Company, *Mechanical Properties of Permanent Mold Casting Alloys*, (Ontario, 1999), <http://www.ramsden.on.ca/alloys.html>
- [24] Kato, Tadayoshi, Mizutani, Atsushi, Ichikawa and Takashi, *Aluminum Wheel*, (US Patents Office, 1996), US 5803552
- [25] EMMIMA E. M. 2008. *Integrated Management system in iron and steel foundry*. PhD. Thesis. TU Košice.
- [26] *Energy and Environmental Profile of the U.S. Metalcasting Industry*. September 1999. U.S. Department of Energy Office of Industrial Technologies.
- [27] FEIGNBAUM A.V. 1991. *Total Quality Control*, 3rd. Edition, McGraw Hill.
- [28] *ISO 9001:2000 Quality Management Systems-Requirements*, International Organization for Standardization, Geneva, Switzerland
- [29] KASSIE A.A., ASSFAW S.B. 2013. *Minimalization of Casting Defects*. IOSR Journal of Engineering. Vol.3. Issue 5.
- [30] L.A. Dobrzański, M. Krupiński, P. Zarychta, R.Maniara "Analysis of influence of chemical composition of Al-Si-Cu casting alloy on formation of casting defects" *JAMME Journal Volume 21, Issue-2 (April-2007)*
- [31] WILSON T.C. 2001. *Implementation for Small Foundries*. Hickman, Williams & Company, Livonia Michigan, ISO 9000, American Foundry Society.
- [32] P. PALIANI, L. ZALEWSKI, J. BARRETO, N. TSUMAGARI, J. BREVICK and C. MOBLEY: Proc. 18th Int. Die Casting Cong. & Exposition, 1995, NADCA, T95ñ046, 149ñ155.
- [33] Dale, Barrie G. et al. (2007); *Managing Quality* 5th ed; ISBN 978-1-4051-4279-3 OCLC 288977828.
- [34] *Ferrous Material & Metallurgy*, "Casting Aluminium Material", JI Handbook, 2000
- [35] L. WANG, T. NGUYEN and M. MURRAY: Proc. 21st Int. Die Casting Cong. & Exposition, 2001, NADCA, T01ñ014, 1-7.

**Mohit Kumar** Pursuing M.Tech. from RIT Roorkee ( Uttarakhand Technical University)

**Amit Kumar Tanwar**- Professor in RIT Roorkee

**Bhagwan Das**-Professor in RIT Roorkee